



Adobe CS3 PDF Files Shows a Box Under a Dropshadow

Problem

When you use Adobe CS3 applications such as Illustrator, InDesign, or Photoshop to generate a PDF of an image that contains a dropshadow, a box with an incorrect color appears in the area around the dropshadow.

The image in Figure 1 illustrates this problem. Note that a box is printed in the area where a dropshadow was placed (as correctly shown in Figure 2). In this example, the background color was a Pantone color. A box was placed on top of the background and assigned a drop shadow. When printed, the background contains an incorrect color in the area around the dropshadow.



Figure 1 Incorrect Dropshadow



Figure 2 Correct Dropshadow

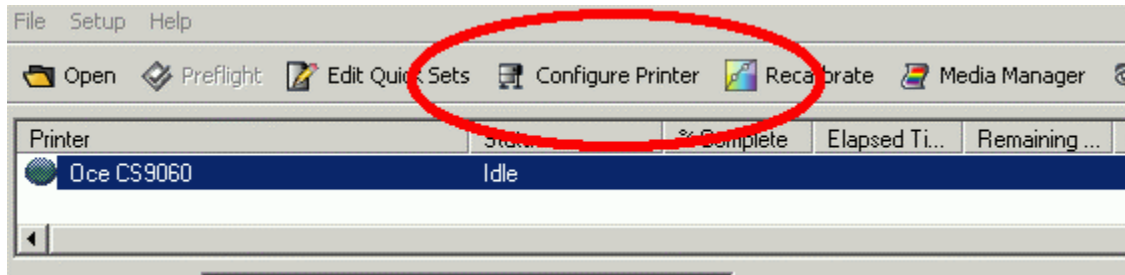
Solution

The solution is to disable the Pantone Color Table in the Onyx software.

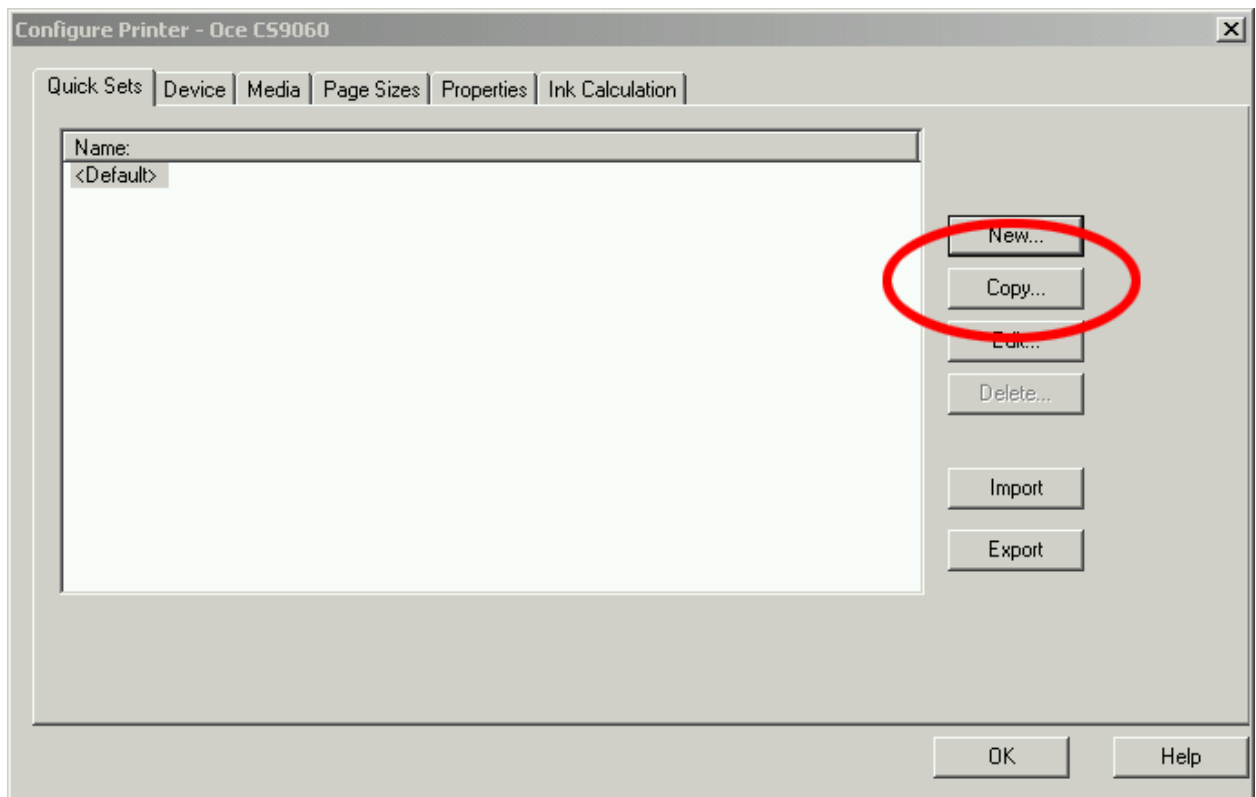
How to Disable the Pantone Color Table

In the Rip-queue:

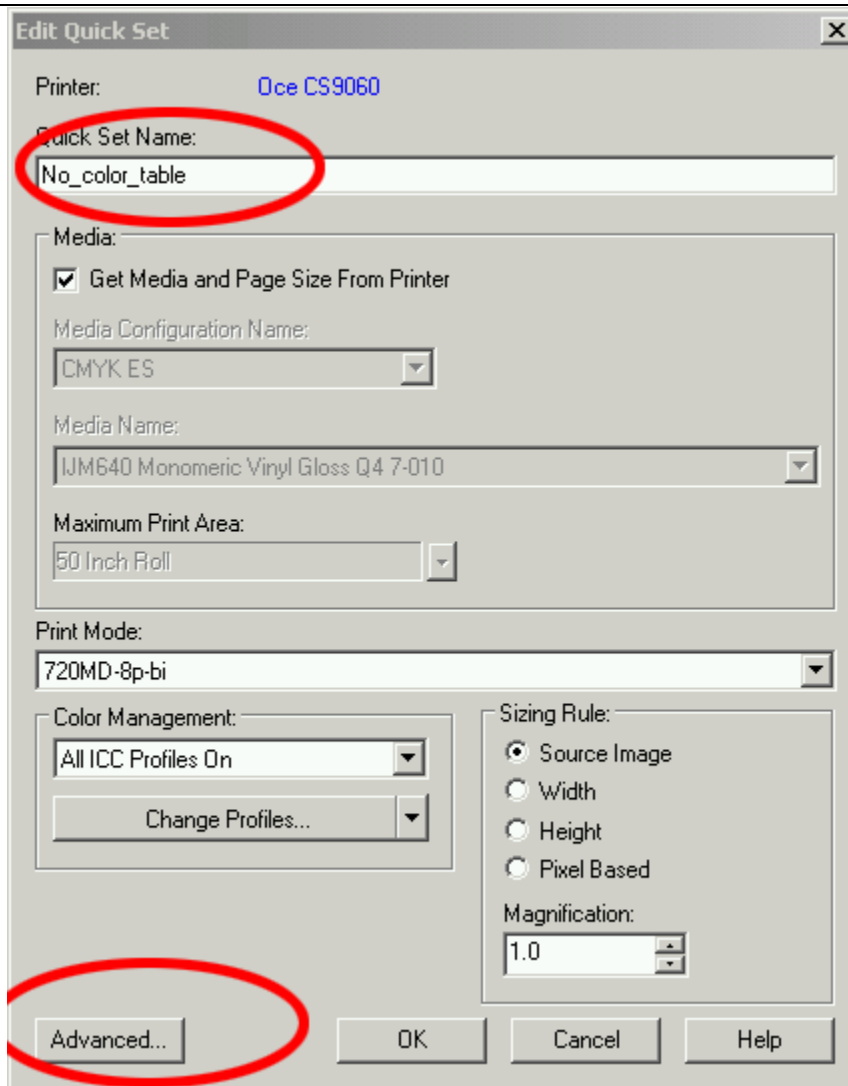
1. Select the Printer.
2. Press 'Configure Printer'.



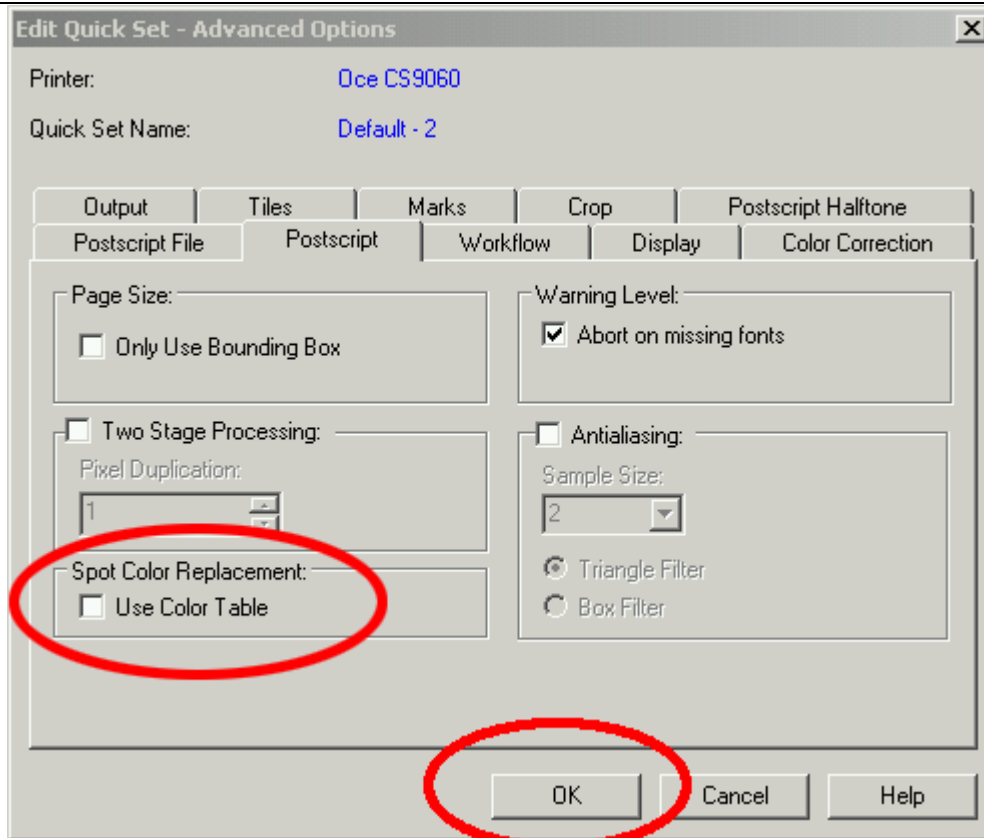
3. Copy The <Default> quickset (or any other quickset) via the Copy Button



4. Press the "Edit" button to edit the new quickset.
5. Change the name to a better name, to describe the purpose of the new quickset.
6. Press the "Advanced..." Button.



7. Select the Postscript Tab
8. Uncheck the tick box, next to "Use Color Table".



9. Press OK to close the advanced settings window.
10. Press OK to close the "Edit Quick Set" window.
11. Open the pdf (from Adobe CS3) with the new quickset.

