



Information Bulletin

Number: 11 • Issued by: ODGS S & S, Vancouver • March 19, 2009

ONYX Graphics Releases ONYX Workflow Software 7.3

ONYX 7.3 has been officially released. Download the Version 7.3 installation file from the "Downloads" section of www.ONYXgfx.com

Version 7.3 new features

- Architectural Enhancements - now supports quick release and updates to all devices
- Save and Open Jobs in Layout Tool
- Presets in Layout for automated application job tools
- Registration simplified – no longer required, link to web site for customer registration
- Add PANTONE metallic, pastel, Process Coated Euro, Process Coated SWOP, and Geo bases for coated and uncoated to Color Replacement Table
- Clear Versioning of Printer drivers and ICC profiles

New Printer drivers

- Over 65 New Printers Supported, including the Seiko ColorPainter H-74s / H-104s (not supported by Océ)
- For the latest list of supported printers, see www.ONYXgfx.com

New cutter drivers

- Mutoh SC-Pro cutter, including the EPOS barcode (reference to Mutoh 7.3 app bulletin)

Product Improvements

- PostScript RIP updates for transparency and spot colors. Most pdf issues related to transparency are now fixed.
- Language translation improvements. In case there is still a translation problem, please forward the information with all details (screen shot, incorrect translation and corrected translation) to dgs.support@oce.com
- The CutServer sees new files created in the cutter hot folders.
- Top offset + cut marks can now be read by the cutter
- K (black) only profiles no longer error out when building linearization
- Corrected patch size for Barbieri Spectro LFP and Spectro Swing

Release Notes

If you would like further detail about this release see the official 7.3 Release Notes at:

<ftp://ftp.ONYXgfx.net/pub/v7/2260973onlinerelease/7%203%200%20Technical%20Release%20Notes.doc>

Please note that Océ does not support non-Océ printers and that the supported printer list lists the supported printers by ONYX.

Operating System support

- Windows XP Professional 32-bit and 64-bit
- Windows Vista Business/Enterprise 32-bit and 64-bit. See the article "Vista support for ONYX" in the ONYX support center on www.ONYXgfx.com for limitations and non supported printers (e.g. scsi printers). This article is continuously updated with the latest information.
- Windows 2000 validation is not done anymore, but existing systems on windows 2000 can be updated to version 7.3. There are no known issues with regard to windows 2000.

Key update

Customers with version 7.x keys can download the software at www.ONYXgfx.com. There is no need to update the hardware key.

Installation procedure

- As always, we recommend that you back up your jobs and profiles before updating any version of software.
- For steps on backing up your printers / media / quick sets, click here: <http://www.ONYXgfx.com/index.php?area=support>
- For information on backing up jobs, click here: <http://www.ONYXgfx.com/index.php?area=support>
- Printer Drivers for versions of 7.0 prior to 7.0.6 are not compatible with 7.3. You must either convert your existing 6.5 printers to 7.3 or download 7.3 PrnInst files from the web.

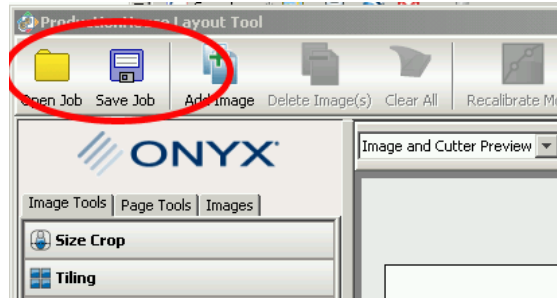
Additional Info

- While this version of ONYX installs and runs on both Vista 32 and 64-bit machines, there are some issues due to variables outside of ONYX's control.
- For more information on current Vista compatibility, please refer to the ONYX Support Center on www.ONYXgfx.com.

Detailed technical information

This section highlights details for the most important improvements

- Save and Open Jobs in Layout Tool

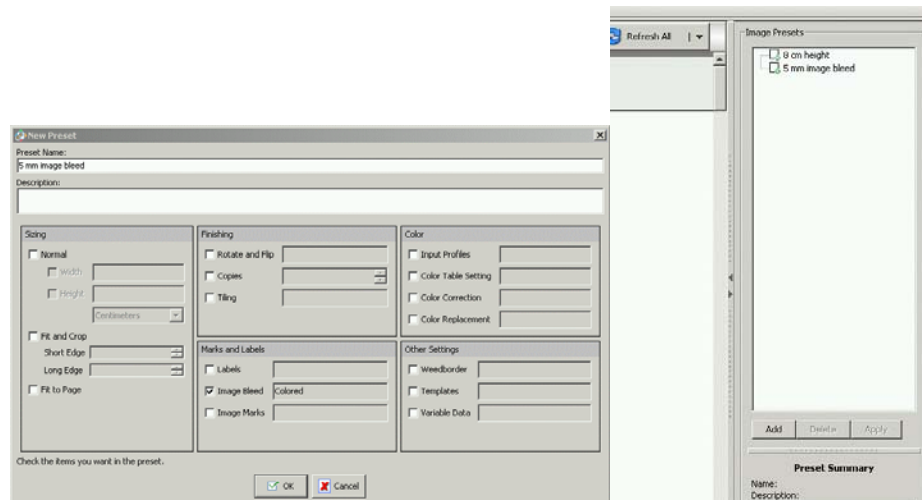


Saving a job will save the layout. The file will contain links to the image files, but not the actual image data.

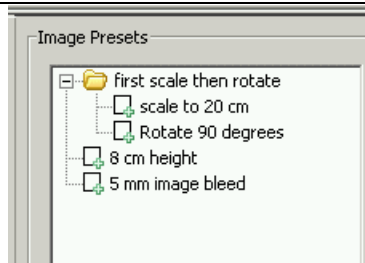
- Presets in Layout for automated application job tools.

All actions in Layout can be automated.

Just make the changes to one image. Clicking on the 'Add' button of the Image Presets will show a window to select the actions.

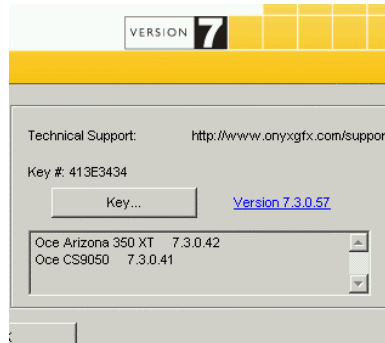


Multiple actions can be put in a folder. A new folder can be made via a right click. Actions can be dragged to this folder.



- Clear Versioning of Printer drivers and ICC profiles

The help->about window will show the versions of all installed drivers.



The ICC profiles in the Media Manager lists now the creation date (in the view media library window).



- Mutoh SC-Pro cutter driver
 - Version 7.3 include the Mutoh SC-PRO (1400 & 1650) driver. The driver will print an EPOS barcode, which is read by the cutter.
 - Multi Segmented jobs are now supported. A roll of media can be loaded and is cut meter by meter.
 - The cutter will detect the orientation of the jobs by reading the barcode.
 - The barcode is read by the scanner, but the file has to be selected manually ONYX CutServer. There is no automatic cut file selection like in the Mutoh CutServer, nor is the EPOS key supported on the cutter.
 - The Mutoh Cutter Workflow document will be adapted for version 7.3.

Here is a list of hints & tips for using the Mutoh SC-PRO cutter:

- When there is no hardware serial port on the PC, the virtual com port for the USB connection needs to be set to COM1. Even though windows will show COM1 is in use and gives warning. Windows shows the existance of a COM1 port, but this port cannot be addressed.
- Rotating a job 90 or 270 degree is not possible. The cutter reads horizontal barcodes only.
- The laserbeam plotting is not implemented
- Saving & Loading jobs from Layout can give problems when auto arrange images is used & overlap images is enabled.
- Loading jobs in Layout can give problems when a cutter is selected.
- There is a long delay between detecting the cutter bounding box and starting to cut
- The default port number for the tcp/ip connection needs to be changed to 10001
- The default speed (100 cm/sec) can result in cutter hardware errors. The speed must be reduced. The speed of 100 cm/sec is the maximum cut speed and may give hardware error messages for some media.
- The communication window stays open for a very long time when very small cut job has been sent to the cutter.
- When a problem occurs or a cut job is cancelled, the communication between the ONYX cutserver and the cutter may have problems and the cutter needs to be switched off/on.