



ONYX ProductionHouse Crashes When Ripping a Separated File

After ONYX ProductionHouse rips an input file, it sends two data files to an Océ Arizona printer that comprise the print job:

- The print file (contains image data to be printed); and
- A preview file (a thumbnail of the job that is displayed on the printer UI).

There are two types of Image Preview files:

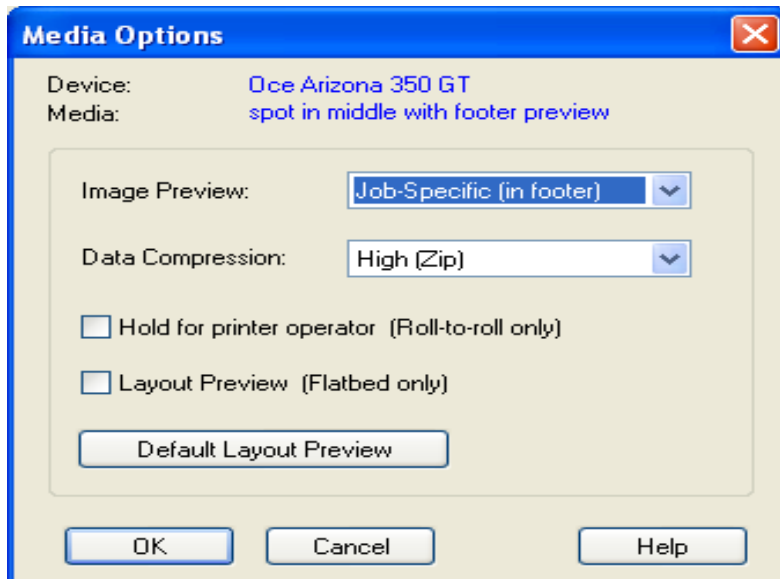
- File Preview (in header); and
- Job-Specific (in footer).

The File Preview type creates a high quality thumbnail but only works for a single copy of an image. The Job-Specific preview creates a lower quality thumbnail and works for multiple copies of an image (or images) and for nested jobs. When a media is created, the default method to select the value for the Media Option "Image Preview" is "Automatic". This allows the software to determine the optimal preview type to use for the data being output.

If a single copy of an input file containing separations is ripped with a "File Preview (in header)" preview type ONYX Production House will crash. To avoid this problem when ripping separated files, you must force the preview type to be: "Job-Specific (in footer)". Use the following procedure to force a footer preview.

How to Ensure a Footer Preview for a Separated File

1. From the Media Manager select the media you will use, and make a copy. (We suggest that you add a description to the new name such as “for separated input” or “footer preview”).
2. Edit the copy of the media and change the Media Options / Image Preview parameter to “Job-Specific (in footer).”



3. Click OK to save the media.
4. You can now use this media for separated input files.

Note: This media will also work for other input files, however an image file that is a single copy will have a lower quality preview in the printer interface than it would if the header preview was used.

We will let you know when this problem is solved with a future software version. Until then always use footer previews when you rip separated input files. Also, please remember to configure ProductionHouse to input separated files as describe below.

Postscript Settings for Separated Files

In ProductionHouse, it is necessary to configure postscript settings to process a separated file correctly into a four-color plus spot print job (the spot is required if you use white ink). Once these settings have been made, it may be more efficient to create a Quick Set for this type of workflow for future use.

Note: When working with separated input files you also need to configure ProductionHouse postscript settings. Use the Job Properties setting in the example below to configure a separated four-color plus spot color print job.

