



### How to Match Colors On Different Printers

---

The purpose of this bulletin is to describe a procedure for matching colors on two different brands/types of printers.

Example: How to get the same (or closely resembling) colors on an Océ ColorWave 600 and an Océ, HP, Epson, or Canon inkjet printer.

It may not be possible to perfectly match colors on two different types of printers but this procedure can be used to achieve a good match using the ONYX workflow.

#### Analyze Printers Color Gamut

The printer with the widest range of colors (largest color gamut) will simulate the other printer.

Before you start you must have ICC output profiles for both printers. The ICC profiles must be made using the CMYK workflow. It is not possible to use a RGB Contone profile for simulation (or proofing) purposes. For the simulation profiles, it is not mandatory to use an Onyx ICC profiles. Third party profiling software can also be used to make ICC profiles. ONYX media models/profiles are stored under the ONYX\db folder, the default name of the ICC file for a media is: ICC Profile Table.icc.

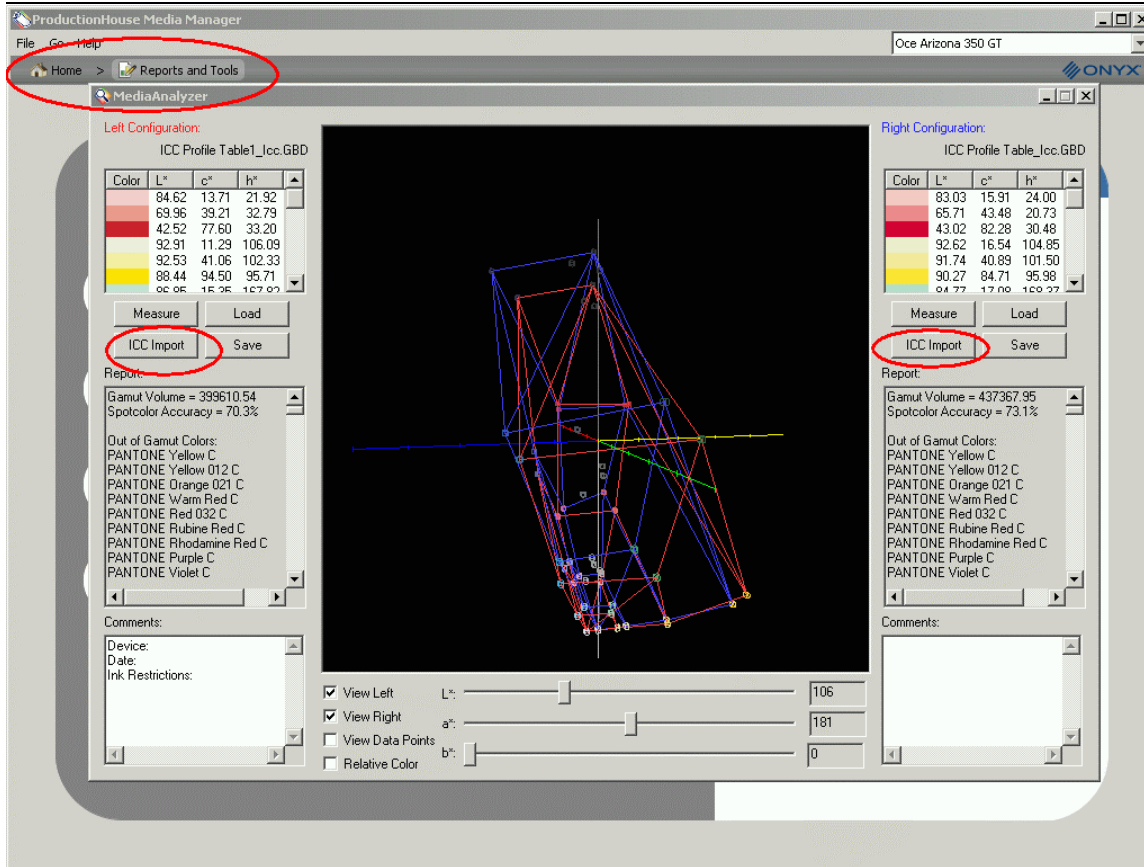
The ONYX workflow software provides a tool to compare the color gamut of both printers. To analyze the color gamut:

1. Start the Media Manager.
2. Select "Reports and Tools" in the main menu.
3. Start the Media Analyzer.
4. Import both ICC profiles, using the "ICC Import" buttons at the left and right.

A wire frame will be displayed for each printer.

The visual display of the color gamut can be rotated, using the 3 sliders below the image.

The wire frame of the color gamut will show the colors that are outside the range for that printer. Whenever these colors are used, both printers will have a mismatch (although it may not be clearly visible until you compare them side-by-side).



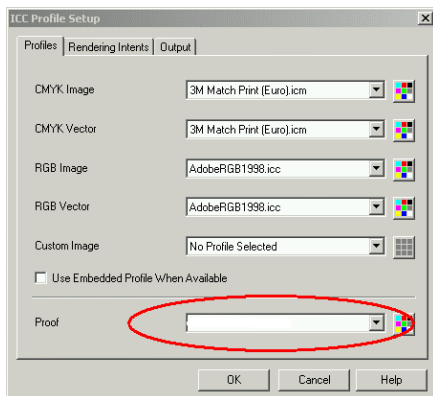
Determine which printer has the largest color gamut; this printer will be used to simulate the other printer.

### Workflow Software Setup

To set up the ONYX software, copy the printer ICC profile (from the printer which should be simulated, i.e. the printer with the largest color gamut) to the ONYX system. A good location for the simulation profile is the ONYX\profiles\cmyk folder.

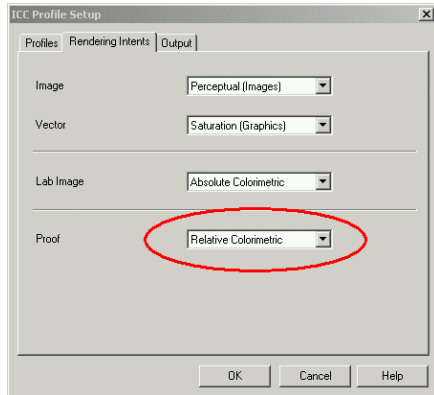
In ONYX, create a new quickset.

Edit the quickset and in the profile set up, specify the printer ICC profile of the printer that should be simulated in the Proof field.



---

By default, the printer simulation will also simulate the paper color. This will give the closest match in color. For less critical installations it will be prepared to use white as paper color. For this purpose change the rendering intent from absolute colorimetric to relative colorimetric.



Warning: When reinstalling ONYX software, remember to backup and restore the simulation ICC profiles.